

1321 S Michigan Ave.



FOR LEASE // 1,452 SF SPACE AVAILABLE



1321 S Michigan Ave.

PROPERTY HIGHLIGHTS

- 1,452 SF small shop retail space available immediately in very high-density heart of South Loop location.
- Garage parking spot available
- Area tenants include: Snap Fitness, Trader Joes, & Jewel Osco, Stretch Lab, Fast Signs, Art of Modern Dentistry, Fire House Restaurant and many more
- Prime location on East side of Michigan Avenue between 13th and 14th Streets

DEMOGRAPHICS

	½ MILE	1 MILE	2 MILES
TOTAL POPULATION	26,990	53,029	187,383
DAYTIME POPULATION	15,375	90,690	556,093
HOUSEHOLDS	15,583	29,578	104,608
AVG HH INCOME	\$158,817	\$153,544	\$165,687

TRAFFIC COUNTS

	COUNT
MICHIGAN AVE	16,115 VPD
ROOSEVELT RD	12,467 VPD

WALK SCORE®

WALK SCORE	95	walker's paradise > most errands can be accomplished on foot
TRANSIT SCORE	91	rider's paradise > world-class public transportation
BIKE SCORE	93	biker's paradise > daily errands can be accomplished on a bike



1321 S MICHIGAN AVE, CHICAGO, ILLINOIS

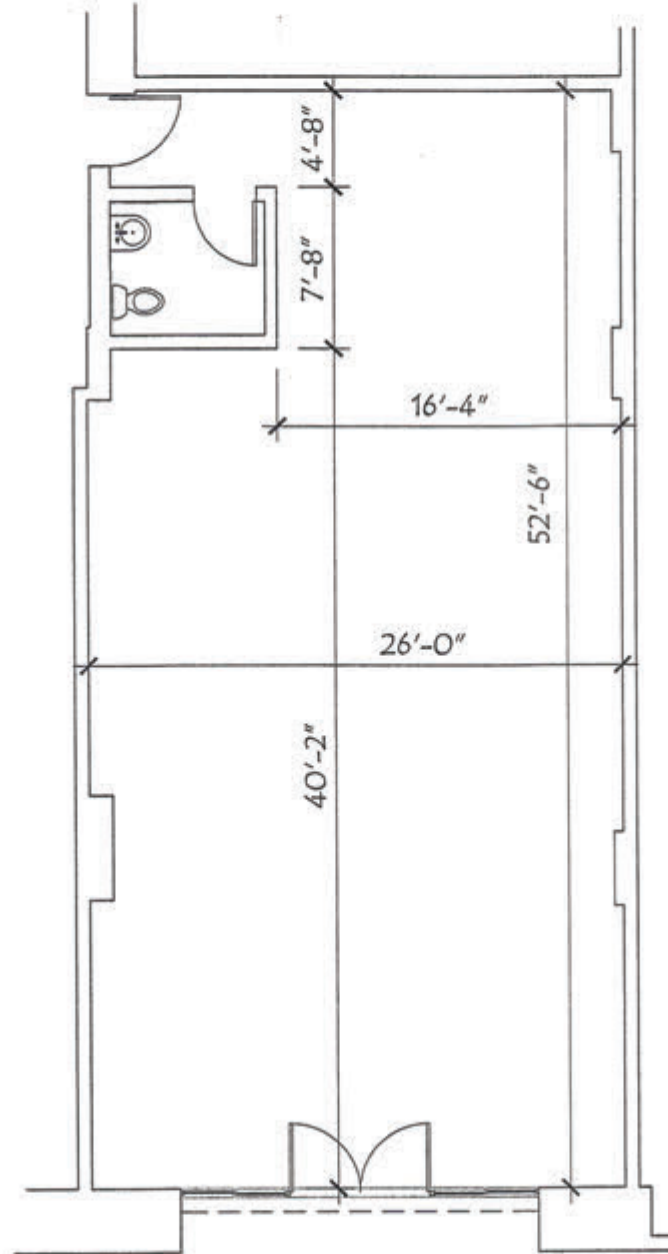
1321 S Michigan Ave.



1321 S Michigan Ave.

SPACE HIGHLIGHTS

- Column Free Space
- 12' Ceilings
- 26' Width
- 20' of storefront glass



RETAIL SPACE
GLA = 1,452 SF



Leasing Contact

CHELSEA HENDERSON

CHENDERSON@METROCRE.COM

847.337.5287



WWW.METROCRE.COM

© 2024 METRO COMMERCIAL REAL ESTATE. ALL RIGHTS RESERVED. ALL INFORMATION CONTAINED HEREIN IS FROM SOURCES DEEMED RELIABLE; HOWEVER, NO REPRESENTATION OR WARRANTY IS MADE TO THE ACCURACY THEREOF.